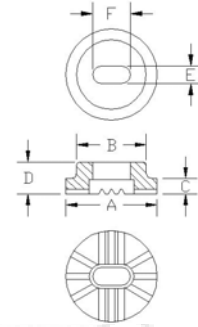


NELSON STUD WELDING

FERRULE SPECIFICATIONS: Refractory Anchor Ferrules

S7X 3/16" "Steerhorn" and **S4X "Y"** Anchor refractory anchor studs have a special weld end shape. The weld ends of these studs are made by doubling the stud back on itself. These weld bases require a special ferrule to fit this weld base.

These ferrules are designed for welding of Nelson **S4X** and **S7X** style refractory anchor studs.



Stud Diameter	Neck Diameter B	Major Diameter D	Height to Neck F	Height Overall M	Ferrule Foot Plate	Ferrule Part Number
2 x 3/16" dia.	0.785	1.030	0.171	0.360	501006018	100101170
2 x 1/4" dia.	0.785	1.030	0.218	0.468	501006018	100101127

Visit our website www.NelsonStudWelding.com for a list of our standard stock products.