

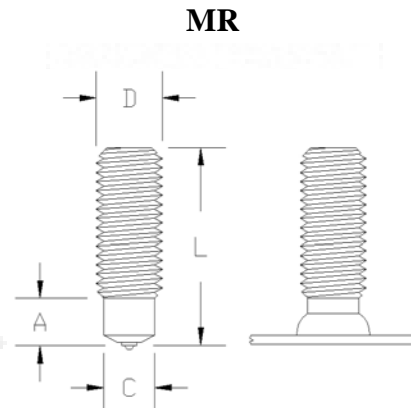
## NELSON STUD WELDING

*SPECIFICATION: Metric MR Reduced Base Studs*



Nelson metric MR threaded studs have a reduced weld base diameter, A, to produce a smaller weld flash diameter than when Nelson Pitch Diameter MP or CPL studs weld base are used. The smaller weld flash allows the use of smaller clearance holes. The strength of the assembly is determined by the area of the reduced weld base rather than the thread area.

For similar function metric studs, see Nelson MD Fully Threaded studs, and MP Partially Threaded studs. In the imperial line of Nelson studs, see CPL Partially Threaded studs, CFP Small Diameter Threaded studs, HBA Full Base Diameter Aluminum studs, and HBL Full Base Diameter studs.



When ordering, specify Type, Diameter, Before Weld Length, Material, Quantity, and Part Number

*Example: MR M16 x 2.00 x 54mm; Mild Steel; 10,000 pieces; #102601015*

Thread Size	Minimum Length L	Weld Base Diameter C	Weld Base Length A	Weld Flash Dimensions			Burn Off	Required Standard Accessories			
				Diameter E	Height F	Clearance Diameter		Ferrule	Ferrule Grip	Chuck	Foot
M6 x 1.00	17.00	4.70	4.00	6.70	2.50	8.30	2.00	100101016	501001005	500001267	502001137
M8 x 1.25	17.00	6.20	4.50	8.80	2.50	9.90	3.00	100101017	501001006	500001009	502001137
M10 x 1.50	22.00	7.90	5.00	11.00	3.00	12.50	3.00	100101164	501001008	500001269	502001137
M12 x 1.75	25.00	9.50	6.50	13.00	4.00	14.80	3.00	100101165	501001009	500001206	502001137
M16 x 2.00	33.00	13.20	8.00	17.00	5.00	18.20	4.00	100101021	501001011	500001016	501001138
M20 x 2.50	34.00	16.50	14.50	21.00	6.00	23.20	5.00	100101246	501001014	500001272	501001138

**MATERIALS:** Studs are available in Low Carbon Mild Steel and Stainless Steel. Other materials are available by special order. For specific grade information and physical and chemical properties, conforming standards, and information on stud plating and heat treating, please see [General Material Specifications](#).

**THREADS:** Standard MR studs are available with up to 75mm of thread length in ISO 13918 6g series thread. Other thread pitch series, and thread lengths greater than 75mm are available as special order.

**FLUX:** All Nelson MR studs have a solid flux load.

Visit our website [www.NelsonStudWelding.com](http://www.NelsonStudWelding.com) for a list of our standard stock products.