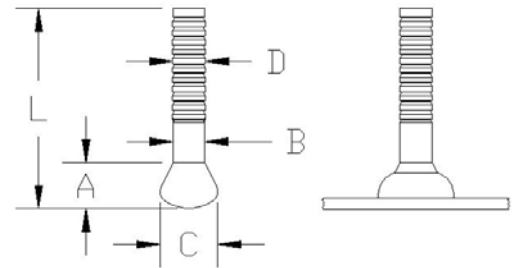


# NELSON STUD WELDING

## SPECIFICATION: N3A Aluminum Navy Type Annular Pin

**N3A**

N3A Navy pins are welded for the attachment of insulation. The insulation is impaled over the welded studs and retained with caps that are driven onto the studs, and lock onto the annular rings. The 5/16" diameter welded end on Nelson N3A pins permits welding without the use of inert gas shielding, which is normally required when welding aluminum studs.



The flat top caps for use with N3A studs are usually supplied in aluminum. They can also be supplied in plated mild steel or stainless steel, per the N3P Annular Ring stud.

The standard N3A cap is shown below and is supplied in aluminum.

For similar function studs, see Nelson [N3P Annular Ring Navy Pin](#), [P2P Double Pointed Insulation Pins](#), [TPC Single Pointed Insulation Pins](#), and [CHP Cupped Headed Insulation Pins](#).

When ordering, specify Type, Description, Material, Quantity, and Part Number

Example: N3A 3/16 x 1"; Mild Steel; 10,000 pieces; #101074014

| Stud Description | Minimum Length L | D     | A     | B     | C     | Required Standard Accessories |           |           |           |
|------------------|------------------|-------|-------|-------|-------|-------------------------------|-----------|-----------|-----------|
|                  |                  |       |       |       |       | Ferrule                       | Chuck     | Grip      | Foot      |
| 3/16 x L         | 1.000            | 0.178 | 0.250 | 0.176 | 0.312 | 100101007                     | 500001005 | 501001006 | 502001137 |

**MATERIALS:** Studs are available in Aluminum. For specific grade information and physical and chemical properties, and conforming standards, please see [General Material Specifications](#).

### Recommended Accessories:

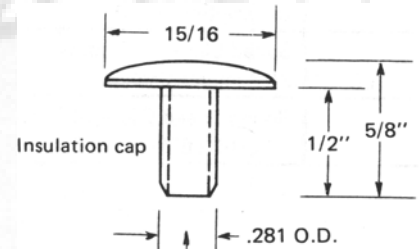
#### SPECIFICATION: Cap for N3A and N3P Pins

Caps are used in conjunction with Nelson N3A and N3P pins to secure many types of insulation to steel plate.

When ordering, specify Type, Description, Material, and Quantity

Example: N3A Insulation Cap Aluminum 10,000 pieces

| Description    | Part Number |
|----------------|-------------|
| Insulation Cap | 101304002   |



**Materials:** The Navy pin cap is supplied in Aluminum. For specific grade information and physical and chemical properties, and conforming standards, please see [General Material Specifications](#).

Visit our website [www.NelsonStudWelding.com](http://www.NelsonStudWelding.com) for a list of our standard stock products.