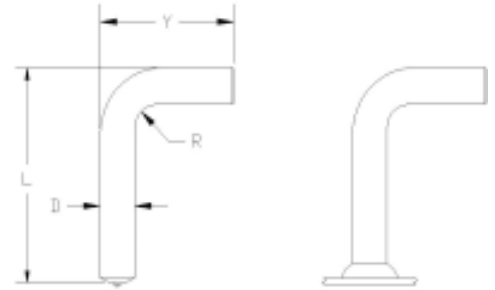


**NELSON STUD WELDING**

*SPECIFICATION: B4L and B4P Reinforcing Standoff Support Studs*

Nelson’s B4L and B4P studs have a 90° bend and are used for exposed hangars and steps. They are also embedded as anchors or supports for positioning reinforcing bars. The basic stud may be an unthreaded NBL or a deformed bar anchor, D2L.



The stud burn off and weld flash information for these studs is the same diameter as NBL no thread type studs.

These Studs are usually welded using a ferrule footplate or split feet. Grips may be used if the weld leg length, “L”, is long enough.

Special chucks are required to hold these studs into the stud welding gun.

Similar studs are the Nelson **E2L “Eyebolt” studs**, **D2L Deformed Bar Anchors**, **H4L Headed Concrete Anchors**, **J2L “J” Bolt studs**, **R6P Rectangular Slotted studs**, **R9L Rope Hook studs**, **S3L Shear Connectors**, **S4X “Y” Anchor studs**, and **S7X Steerhorn Anchors**.

**When ordering, specify Type, Description, Weld Leg Length, Unwelded Leg Length, Material, Quantity, and Part Number**

*Example: B4L 0.250 x 1.500 x 1.312”; Mild Steel; 10,000 pieces; #101005074*

Stud Diameter	Minimum Length L	Minimum Y	R	Required Standard Accessories		
				Chuck	Ferrule	Foot Plate
0.125	1.000	1.125	0.063	500008001	100101001	501006010
0.187	1.125	1.250	0.125	500008004	100101003	501006001
0.250	1.125	1.312	0.125	500008005	100101067	501006003
0.312	1.250	1.500	0.218	500008006	100101007	501006002
0.375	1.500	1.530	0.218	500008007	100101099	501006005
0.437	1.625	1.625	0.250	500008009	100101009	501006004
0.500	1.750	1.687	0.250	500008010	100101114	501006007
0.625	1.875	2.000	0.312	500008012	100101187	501006008
0.750	2.750	2.812	0.500	500008013	100101152	501006008
0.875	3.375	3.375	0.500	500008014	100101140	501006009

**MATERIALS:** Studs are available in Low Carbon Mild Steel and 18-8 Stainless Steel. For specific grade information and physical and chemical properties, conforming standards, and information on stud plating and heat treating, please see **General Material Specifications**.

**FLUX:** All Nelson B4L and B4P studs have a solid flux load.

Visit our website [www.NelsonStudWelding.com](http://www.NelsonStudWelding.com) for a list of our standard stock products.