

**NELSON STUD WELDING**

*SPECIFICATION: XBL and XXL Round Corner Square Studs*

**XBL, XXL**

Nelson XBL and XXL Round Corner Square studs are a patented product developed for the installation of hanging overhead wire ways in ships. The round weld base facilitates welding in all positions, while the 3/4" round corner square upper section of the stud and cross-drilled holes provide an attachment point for a variety of mounting hardware. Such hardware may be used to attach cable trays, light fixtures, ducts, and pipes.

The crossbolt holes in Nelson XBL and XXL studs are accessible after 1 or 2 inches of insulation has been installed. This design permits flexibility in construction and repair scheduling, which is not possible when brackets are welded directly to the ship's structure. The standard holes accommodate 3/8-16 bolts and are spaced 1" apart.

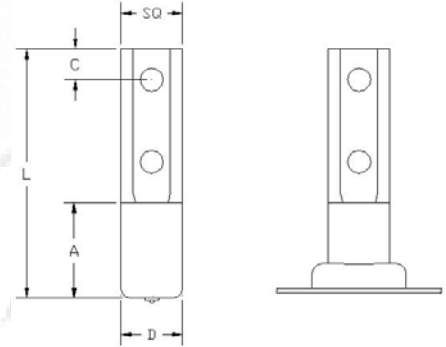
The XBL series of studs have full diameter weld bases, while the XXL studs have reduced weld bases. The smaller 1/2" diameter weld bases are used for individual light fixtures and permit welding with smaller power sources.

Longer round corner square studs and different hole diameters and spacing can be applied.

Nelson Round Corner Square studs have been shock and vibration tested and are Navy approved.

**When ordering, specify Type, Square Size, Overall Length, Weld Base Diameter (if not the same as square), Number of Holes, Material, Quantity, and Part Number**

**Example: XXL 3/4" square x 2-1/4" long x 1/2" weld base diameter; 2 holes; Mild Steel; 5,000 pieces; #101017193**



Type	Base Dia. D	Minimum Base A	Holes	Length L	Hole to End C	Required Standard Accessories		
						Ferrule	Ferrule Grip	Chuck
XXL	1/2"	1.625	1	3.562	0.437	100101114	501001011	500007035
XXL	1/2"	2.000	2	4.062	0.375	100101114	501001011	500007035
XBL	3/4"	1.125	2	3.062	0.375	100101152	501001014	500007035

**MATERIALS:** Studs are available in Low Carbon Mild Steel. The option for electrozinc plating coating is available. For specific grade information, physical and chemical properties, conforming standards, and information on stud plating and heat treating, please see [General Material Specifications](#).

**FLUX:** All Nelson XXL and XBL studs have a solid flux load.

Visit our website [www.NelsonStudWelding.com](http://www.NelsonStudWelding.com) for a list of our standard stock products.