



Nelweld[®] N1500i[™]

Third generation inverter technology propels stud welding into the 21st century

This new, dependable, light-weight stud welder is not light in power and precision. It can deliver up to 1500 amps for 3/4" (19mm) full base diameter stud welding. The friendly user interface has 10* preset buttons, bright alpha-numeric displays, graphic gun, and weld quality indicator. Its simplicity reduces set-up time, operator training, and error. Precision control at 60,000 Hz frequency ensures the most stable arc, accurate heat input and highest quality welding process. The features and benefits include:

- **Weld Monitor[™]** built-in arc energy watchdog to detect bad welds from actual process signals
- **Gun Monitor[™]** built-in gun watchdog to match gun speed and adaptively compensate for gun wear
- **Cable Monitor[™]** built-in cable and connector watchdog to detect cable wear and loose connector
- **Stud Expert[™]** choose setting from stud diameter and can be re-programmed by user spreadsheet
- **Pulse Waveform** reduces heat input, cuts surface contaminants and stiffens arc for out-of-position welds
- **Plunge Current[™]** saves electricity, reduces cable wear, and maintains arc energy despite gun wear
- **Cold Plunge Prevention[™]** extends arc time when stud plunge is slowed down**
- **Nelware[™]** production weld quality record keeping and arc signals oscilloscope PC software

Integrated gas control option allows programmable pre and post flow for aluminum and galvanized sheet welding. The welder carries a 2 year or 1,000,000 weld warranty.

Applications

- Shipbuilding, industrial, automotive repair and production
- Insulation pins, threaded studs, and refractory anchors
- Auto-feed hand gun applications, such as wide top, fir tree, threaded studs and trim studs

* Extendable to 40 programmable presets to store prequalified weld settings in production.
** For example, when weld spatter gets stuck between the stud and the ferrule.

N1500i

Technical Data

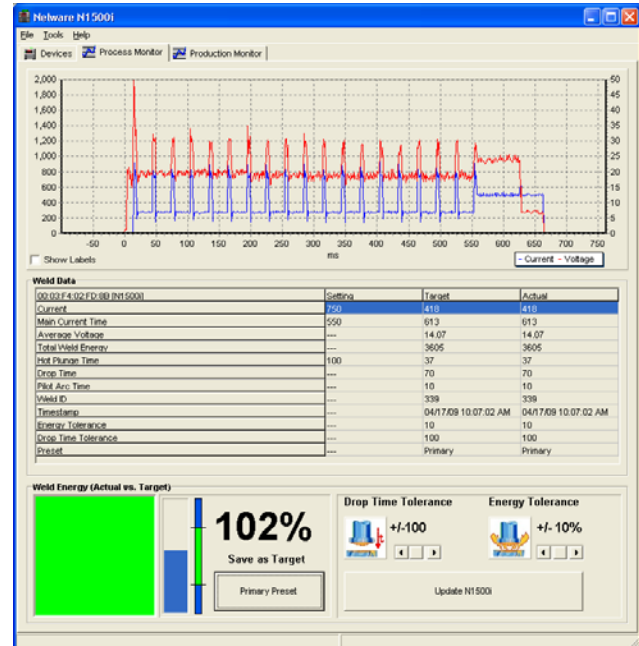
N1500i

Stud diameter	12 gauge to 3/4" (3-19 mm)
Weld Process	Drawn arc, gas arc, and short cycle
Weld Current	50A-1500A continuously adjustable
Weld Time	5 – 1000 ms
Weld Rate	4 studs/min @ 3/4" (19 mm) 8 studs/min @ 5/8" (16 mm) 14 studs/min @ 1/2" (13 mm) 28 studs/min @ 3/8" (6 mm)
Dimensions	10 5/8" X 16 1/2" X 28" 27 cm X 42 cm X 71 cm
Weight	79 lb (36 kg) with input cord
Input Power	3 phase 208-240V, 50/60 Hz @ 60A 3 phase 400-575V, 50/60 Hz @ 30A 1 phase 200-220V, 50/60 Hz @ 60A
Material	Steel, stainless steel, aluminum, heat-resistant steel, advanced high strength steel
Gun	Light duty pinning gun, standard duty NS-40 Heavy duty NS-20, PFL901, motorized gun
Insulation	IP23S



Options

- Input voltages: 230V, 460V, 575V, and 400V CE
- Power connectors: Dinse, Camlok
- Gun connectors: Hubble, R&S, Binder, Harting
- Gas control kit
- Nelware™ PC software
- Mobility cart
- Protective bracket



USA

7900 West Ridge Road
Elyria, OH 44036-2019
Telephone: 800.635.9353
Fax: 440.329.0526
www.NelsonStudWelding.com

Germany

Phone: 49.2332.661.0

China

Phone: 86.22.26371514

France

Phone: 33.1.34.11.94.00

Canada & Mexico

Phone: 800.635.9353

Italy

Phone: 39.11.6059230

Great Britain

Phone: 44.1296.433500