



Nelweld[®] N800i[™]

Third generation inverter technology propels stud welding into the 21st century

This new, dependable, light-weight and compact stud welder is not light in power and precision. It can deliver up to 800 amps for 1/2" (12mm) full base diameter stud welding. The friendly user interface has 10* preset buttons, bright alpha-numeric displays, graphic gun, and weld quality indicator. Its simplicity reduces set-up time, operator training, and error. Precision control at 60,000 Hz frequency ensures the most stable arc, accurate heat input and highest quality welding process. The features and benefits include:

- **Weld Monitor[™]** built-in arc energy watchdog to detect bad welds from actual process signals
- **Gun Monitor[™]** built-in gun watchdog to match gun speed and adaptively compensate for gun wear
- **Cable Monitor[™]** built-in cable and connector watchdog to detect cable wear and loose connector
- **Stud Expert[™]** choose setting from stud diameter and can be re-programmed by user spreadsheet
- **Pulse Waveform** reduces heat input, cuts surface contaminants and stiffens arc for out-of-position welds
- **Plunge Current[™]** saves electricity, reduces cable wear, and maintains arc energy despite gun wear
- **Cold Plunge Prevention[™]** extends arc time when stud plunge is slowed down**
- **Nelware[™]** production weld quality record keeping and arc signals oscilloscope PC software

Integrated gas control option allows programmable pre and post flow for aluminum and galvanized sheet welding. The welder carries a 2 year or 1,000,000 weld warranty.

Applications

- Shipbuilding, industrial, automotive repair and production
- Insulation pins and threaded studs

* Extendable to 40 programmable presets to store prequalified weld settings in production.
** For example, when weld spatter gets stuck between the stud and the ferrule.

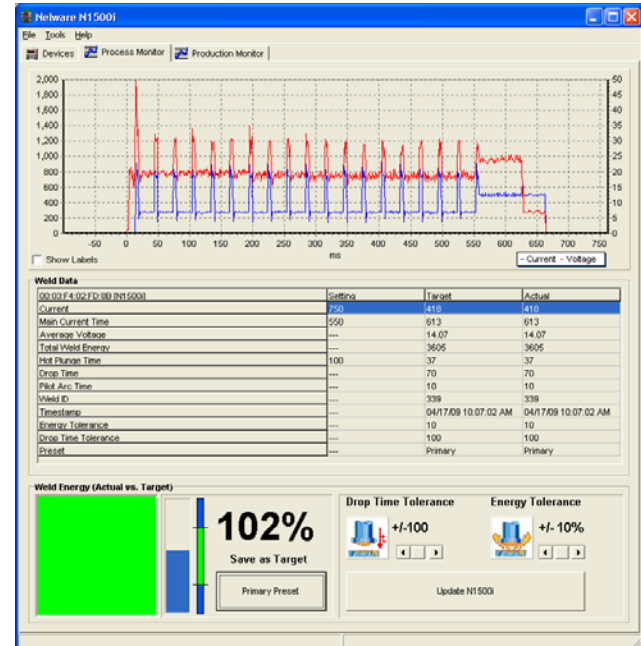
N800i

Technical Data

Stud diameter	12 gauge to 1/2" (3-12 mm)
Weld Process	Drawn arc, gas arc, and short cycle
Weld Current	50A-800A continuously adjustable
Weld Time	5 – 1000 ms
Weld Rate	3 studs/min @ 1/2" (12.7 mm) 6 studs/min @ 3/8" (10 mm) 12 studs/min @ 1/4" (6 mm)
Dimensions	13" X 10" X 20 1/2" 33 cm X 25 cm X 52 cm
Weight	40 lb (18 kg) without input cord
Input Power	3 phase 208-240V, 50/60 Hz @ 60A 3 phase 400-575V, 50/60 Hz @ 30A
Material	Steel, stainless steel, aluminum, heat-resistant steel, advanced high strength steel
Gun	Light duty pinning gun, standard duty NS-40
Insulation	IP23S
Options	Input voltages: 230V, 460V, 575V, and 400V CE Power connectors: Dinse, Camlok Gun connectors: Hubble, R&S, Binder, Harting Gas control kit Nelware™ PC software Mobility cart Protective bracket



N800i



USA

7900 West Ridge Road
Elyria, OH 44036-2019
Telephone: 800.635.9353
Fax: 440.329.0526
www.NelsonStudWelding.com

Germany

Phone: 49.2332.661.0

China

Phone: 86.22.26371514

France

Phone: 33.1.34.11.94.00

Canada & Mexico

Phone: 800.635.9353

Italy

Phone: 39.11.6059230

Great Britain

Phone: 44.1296.433500